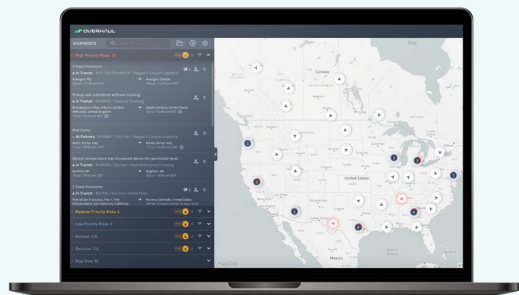


Mitigate Risk with Overhaul and SHI

Protect your cargo from the sky-high costs of in-transit theft, pilferage, and spoilage. Overhaul's Risk solutions help your security and quality teams lower your loss ratios, pro-actively manage the risk of entering new markets, and improve the collaboration between your network partners.



6 minutes

Average response time of
Overhaul's Incident Response Team
after an incident

80%

Reduction in theft attempts
at a Fortune 500 consumer
electronics company

\$226M

Real-time interventions
associated with at-risk shipments

Why Overhaul

Overhaul's multi-modal visibility and risk management injects real-time, corrective responses into your operations. Our Risk solutions simplify the dynamic nature of the supply chain system, delivering a less fragmented picture to help recognize when – and how – to take corrective action.

1. Automated, proactive risk alerts:

Overhaul gives you more than just dots on a map. Our real-time risk management gives you dynamic intelligence and visibility, so you can anticipate risks and take corrective and preventative action.

2. Unified, real-time view:

Overhaul's always-on software gives you a single, unified view of what's happening to shipments and assets in real-time. It's true situational awareness.

3. Connect to law enforcement:

Overhaul's in-transit connection enables law enforcement to react with all the information they need to track, secure, and recover lost cargo. When Overhaul calls, law enforcement pick up the phone.

4. Human-in-the-loop intelligence:

Leverage your IoT data to take cargo security to the next level. Work with us for 24/7/365 human-in-the-loop monitoring, plus added protection from features like instant alarm notifications that let you lock cargo in place.

